



D-Series Automatic Engine Overspeed Shut Down Valves

(Mini Range)

Selection, Application and Maintenance

Valve Numbers

D29, D30, D41,
D34BF, D35B, D39BF,
D29-AM, D30-AM, D41-AM
D34BF-AM, D35BF-AM,
D39BF-AM

DESCRIPTION

A range of small spring loaded poppet valves designed to automatically stop an engine by closing down the air intake should excessive overspeeding occur.

The closing force on the valve is provided by the intake air flow passing through. As the air flow increases, the closing force builds up. This is resisted by a spring, the pre-load of which is adjustable such that at a given air flow the resulting force overcomes the spring resistance and causes the valve to close. Once closed the valve will not reset to the open condition until the engine stops.

This type of valve may be fitted to either naturally aspirated or turbocharged engines. It should be noted however that for a given valve setting the repeatability of the actual automatic shut down speed has a greater scatter in the case of a turbocharged engine. However, unless for special reasons a precisely repeatable shut down speed is required, adequate protection from excessive overspeed and potential resulting damage is still achieved.

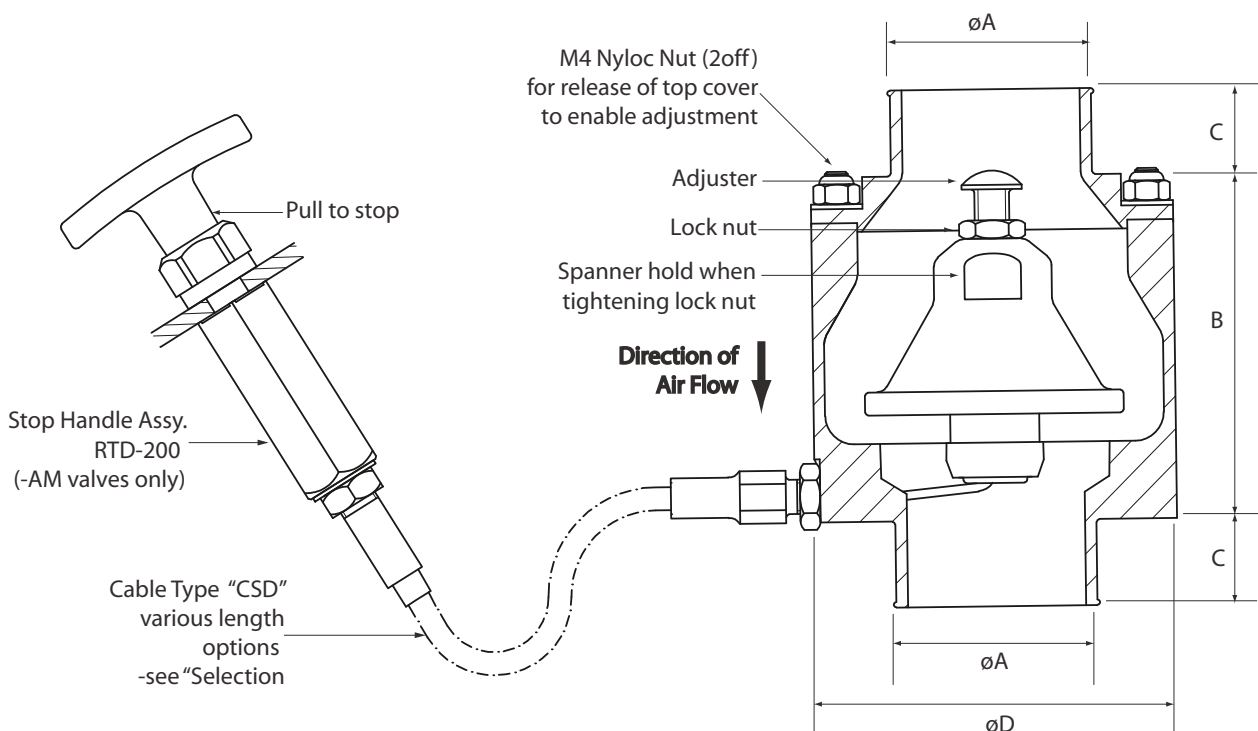
Types D34BF, D34BFS, D35BF, D35BFS, D39BF and D39BFS all include an integral engine air cleaner. Types D29, D30 and D41 are not available with an integral air cleaner.

A manual shut down option is available for all types.

Basic Dimensions: D29, D30 and D41

Valve Type	Auto Overspeed Only	Auto Overspeed and Manual Shut Down	Outside Diameter 'A' (Size range in mm)		'B' (mm)	'C' (mm)	Ø 'D' (mm)	Approximate Weight (Kg)
			Minimum	Maximum				
D29			25mm (1")	34mm (1 1/8")	60	15	63	0.3
D29-AM								
D30			35mm (1 3/8")	45mm (1 3/4")	60	15	63	0.3
D30-AM								
D41			38mm (1 1/2")	58mm (2 1/4")	60	17	76	0.4
D41-AM								

VALVE TYPE D30-AM

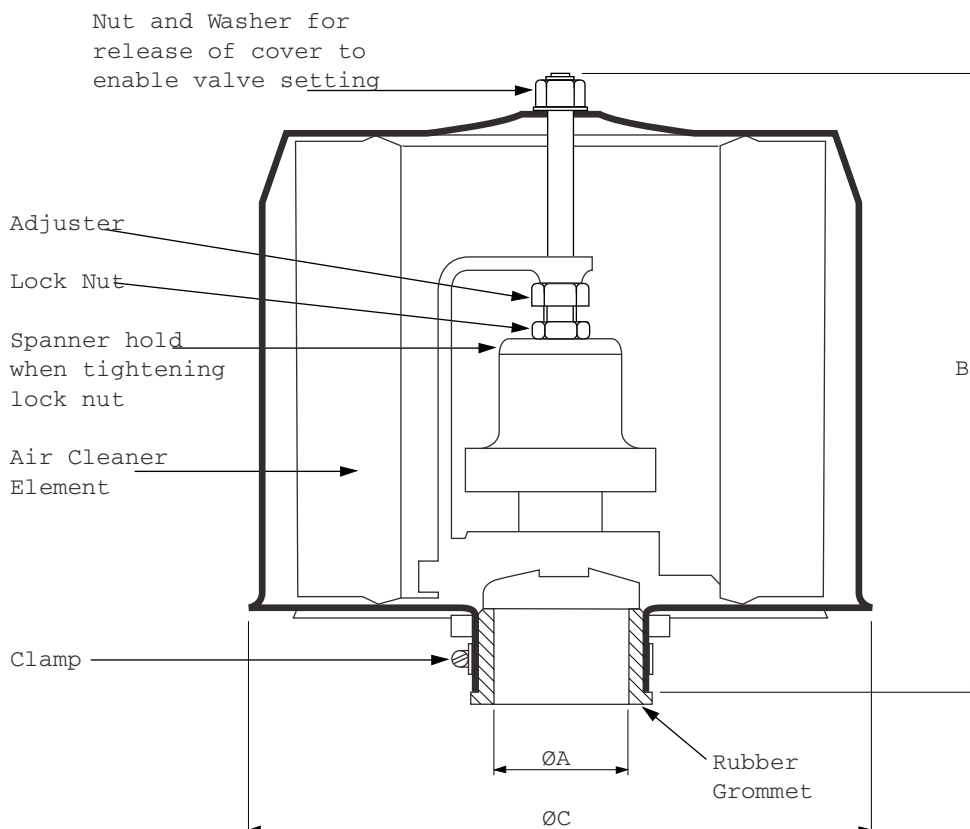


Basic Dimensions: D34BF, D35BF and D39BF Valves.

Valve	Auto Overspeed Only	Auto Overspeed and Manual Shut Down	Ø 'A' (mm)	'B' (mm)	Ø 'C' (mm)	Weight (Kg)
D34BF-35	☐		35	164	158	1.2
D34BF-AM-35		☐	35	186	158	1.3
D34BF-38	☐		38	164	158	1.2
D34BF-AM-38		☐	38	186	158	1.3
D35BF-35	☐		35	164	158	1.2
D35BF-AM-35		☐	35	186	158	1.3
D35BF-38	☐		38	164	158	1.2
D35BF-AM-38		☐	38	186	158	1.3
D39BF-40	☐		40	164	158	1.2
D39BF-AM-40		☐	40	186	158	1.3
D39BF-42	☐		42	164	158	1.2
D39BF-AM-42		☐	42	186	158	1.3
D39BF-44	☐		44	164	158	1.2
D39BF-AM-44		☐	44	186	158	1.3

The same basic dimensions apply to the equivalent D34BFS, D35BFS and D39BFS types

VALVE TYPE D35BF-38



SELECTION

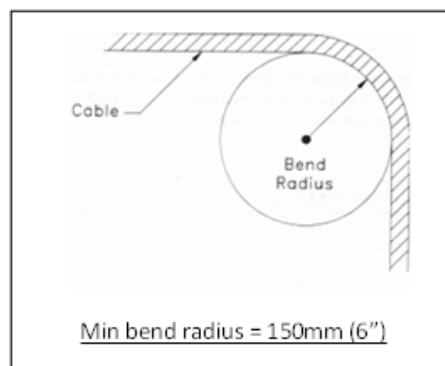
1. From the table below, select the valve type to suit the power output of the engine.

Valve type	Engine Power at Rated Speed	
D29	1.5 to 8kW	(2 to 11hp)
D30	3 to 18kW	(4 to 24hp)
D41	4 to 27 kW	(6 to 36hp)
D34BF	1 to 2kW	(1 to 3hp)
D35BF	3 to 11kW	(4 to 15hp)
D39BF		
D35BFS	12 to 20kW	(16 to 27hp)
D39BFS		

Note: Above recommended power ranges are applicable to all variants of each valve type.

2. For the valve type identified in 1, select the required diameter $\varnothing A$ - see pages 2 or 3. Note the end tubes of the D29, D30 and D41 valves are designed to fit into the bore of the engine air intake hose. The rubber grommets of the D34, D35 and D39 types are designed to push over the outside diameter of a metal air intake pipe.

3. When the manual shut down option is specified, select the length of shut down cable required from the table below. Note, other lengths may be available on request.



Cables for D29, D30 and D41 Valves	Cables for D34BF, D35BF & D39BF Range Valves	Length (metres)
CSD-100	CLD-100	1.0
CSD-150	CLD-150	1.5
CSD-200	CLD-200	2.0
CSD-300	CLD-300	3.0

Note: For Larger sizes of 'D' valves see Chalwyn data sheets CE204, CE205 and CE231.

Important Note.

Where incorporated the Chalwyn valve manual shut down is intended for emergency use and for system checking only. ALWAYS retain the engine fuel stop system for routine engine shut down.

FITTING

SAFETY

WARNING

- Care should be taken when unpacking to prevent injury.
- Exhaust gases may cause permanent respiratory problems, suffocation or death. Any exhaust systems should be piped out of enclosed areas.
- Ensure that a hot engine has sufficiently cooled before commencing any work.
- Ensure that the engine is prevented from being started before commencing work.
- The D Valve should be located in a safe and easily accessible position to prevent injury to the operator due to moving parts or contact with hot surfaces while setting the valve.
- Parts of the machinery on which workers are likely to move about or stand to set the Valve, should be designed and constructed in such a way as to prevent workers from slipping, tripping or falling on or off these parts.
- A risk assessment should be conducted before commencing work, to ensure that all hazards such as exhaust fumes, risks due to moving parts, noise and hot surfaces have been eliminated or minimised.

NOTES

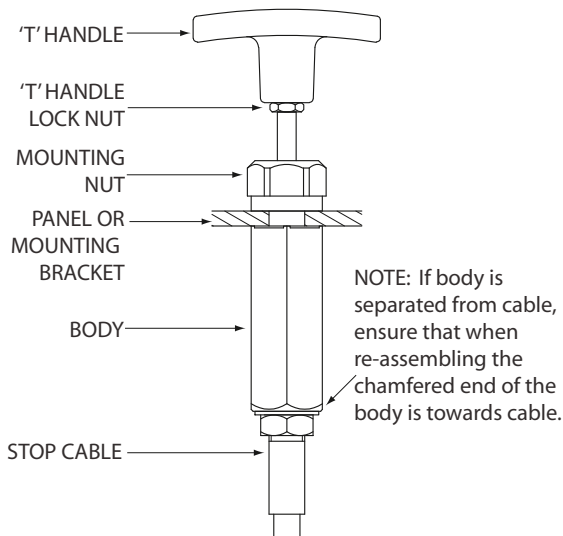
- No special handling requirements apply to the D Valve.
- Carefully read and fully understand the installation instructions before commencing work.
- Only competent personnel should install the D valve.
- Wear appropriate Personal Protective Equipment including safety footwear, safety glasses, thermal and oil resistant gloves and ear plugs.

1. Valves with the manual shut down option are supplied complete with the manual stop cable and 'T' handle fitted and adjusted. Do not separate cable from handle or valve. (See paragraph 5 and 6)
2. It is recommended that D29 and D34BF valves are fitted with the air flow direction towards the engine between horizontal and vertically downwards. All other Chalwyn Mini Valves can be fitted at any attitude subject to correct functioning as established during adjustment - see page 6. For D29, D30 and D41 range valves also ensure that:
 - a) *The engine intake air flow direction is as marked on the valve.*
 - b) *If an intake flametrap is fitted, the valve is installed between the air cleaner and flametrap.*
 - c) *The hose into which the valve is fitted provides adequate support and prevents excessive vibration. If necessary support brackets should be considered taking into account relative movement between the valve and engine.*
3. Particular care must be taken to ensure integrity of the pipework between the Chalwyn valve and engine intake manifold. Ideally metal pipework should be used. Where unavoidable, gaps in the metal pipework should be as short as possible, (taking into account any relative movement) and connected by re-inforced rubber hose. The possibility of hose collapse on closure of the valve must be avoided.
4. Any engine crankcase breather connections into intake system between the Chalwyn valve and engine, or any internal crankcase breather arrangement venting directly into the engine intake ports, must be sealed and replaced by a external breather system venting either to atmosphere or to the intake system upstream of the shut down valve. External breather system kits for various engine types are available from Chalwyn.
5. Valves fitted with manual shut down handle assembly RTD-200. Prepare a Ø10mm (3/8") hole in the panel/bracket to which the stop control is to be mounted. Release the handle locknut. Remove the handle, handle lock nut and mounting nut. Offer up the RTD-200 body to the back face of the

FITTING Continued

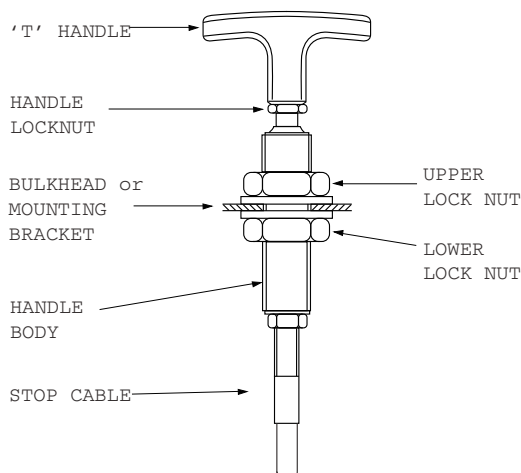
panel/bracket allowing the internal rod of the RTD-200 to project through the prepared hole. Refit the mounting nut and fully tighten. Refit handle locknut winding as far as possible onto the threaded rod. Refit handle winding hard down onto the locknut and then tightening locknut onto the handle. Note during this operation the handle and locknut will need to be held out against the valve spring return load.

Handle assembly type RTD-200



- Valves fitted with the manual shut down handle assembly RTD-100. Fit through a suitable $\text{\O}20\text{mm}$ ($3/4"$) hole in a bulkhead or mounting bracket as follows. Release the handle locknut. Remove the handle, handle locknut and upper locknut and washer. Thread handle body through the bulkhead/bracket. Refit upper locknut and washer. Adjust lower and upper locknuts to position handle and tighten. Refit handle locknut and handle. Tighten locknut.

Handle assembly type RTD-100



ADJUSTMENT

SAFETY

- When adjusting the D Valve, take care to ensure that contact with hot surfaces or entanglement in adjacent equipment is avoided

WARNING

NOTE

- If a manual shut down cable assembly is fitted, ensure that excessive effort is not required to operate the manual override.

Once the Chalwyn valve is installed, adjustment of the overspeed trip setting is carried out using the adjuster and locknut (refer to diagrams). Basically rotating the adjuster clockwise will increase the engine speed at which automatic shut down occurs.

As supplied, the valve will be adjusted such that shut down will generally occur well below the engine high idle speed. To increase the speed at which automatic shut down occurs, proceed as follows:

1. If the manual shut down option is fitted check that the shut down cable is set to the run position ('T' handle pushed in) throughout the adjustment procedure.
2. Start engine. Slowly accelerate. Note speed at which shut down occurs.
3. In the case of D29, D30 and D41 range valves remove the inlet hose and top cover. For D34/D35/D39 valves remove the air cleaner cover and filter element.
4. Release adjuster lock nut. Turn adjuster one turn clockwise. Tighten locknut.
5. Refit all parts (including the inlet hose from the air cleaner in the case of D29,D30 and D41 range valves).
6. Start engine - Slowly accelerate. Note speed at which shut down occurs.
7. Repeat steps '3' to '6' until the first setting at which the engine does not shut down at high idle speed (i.e. maximum throttle, no load).
Then either:
 - a) *Use the results of shut down speed versus adjuster setting as a calibration check to make a final adjustment to give the required setting (typically 10% to 15% over high idle).*
 - or**
 - b) *If a very precise setting is not required, turn the adjuster a further one turn clockwise to take the shut down above high idle speed by a suitable margin. When using this setting procedure it may be found that the engine occasionally shuts down during the normal operation. If so, turn the adjuster clockwise by a further one half turn.*
8. Finally ensure the adjuster locknut is fully tightened. (Use a thread lock adhesive on the locknut threads).
9. For valves with manual shut down re-start engine and check the manual shut down functions correctly. **IMPORTANT.** After operation of the manual shut down control, always ensure that, before re-starting the engine, the 'T' handle is fully pushed into the run position.

Notes:

Turbocharged Engines.

When setting a valve fitted to a turbocharged engine using the preceding method, it may be found that at high engine power outputs, the engine will shut down at a lower speed than required. If this occurs, further small adjustments in steps of one half turn clockwise should be made until the problem is eliminated.

Insufficient Adjustment.

Should there be insufficient adjustment to set the shut down speed at the required level contact your Chalwyn Distributor to check for correct valve spring selection.

Jammed Valve.

If in the course of adjusting the valve it jams on its seat, release by turning **CLOCKWISE** viewed from adjuster end

MAINTENANCE

SAFETY

WARNING

- When externally cleaning the valve ensure the engine is sufficiently cooled before commencing work, if cleaning a hot valve take extra care to avoid touching hot surfaces and to avoid entanglement in adjacent equipment.
- Take care not to trap fingers when making adjustments to the valve setting.
- Equipment contains springs, during dismantling ensure that spring forces are safely removed.
- When internally cleaning components with chemical agents avoid contact with skin, inhalation and ingestion of the cleaning agents and dirt / debris removed. Appropriate PPE should be worn.

NOTES

- No special handling requirements apply to the D Valve.
- Carefully read and fully understand the maintenance instructions before commencing work.
- Only competent personnel should maintain the D valve.
- Wear appropriate Personal Protective Equipment including safety footwear, safety glasses, thermal and oil resistant gloves and ear plugs.

Routine maintenance should be undertaken as below. Note that not all builds include an integral engine air cleaner.

Daily: “-AM” types only. Check satisfactory shut down occurs when the stop handle is operated.

Three Monthly:

1. Disconnect intake pipework and release the valve from any support brackets etc. to allow it to be removed.
2. Inspect the valve internally for cleanliness. If necessary clean in paraffin or white spirit taking normal precautions. Dry the valve thoroughly.
3. Check there is no excessive wear and that the valve moves smoothly over its complete operating stroke. **DO NOT LUBRICATE.**
4. Refit valve. Check valve setting based on the “Adjustment” instructions given herein. Note it is important that the final adjustment is checked with the complete intake system fully in place. e.g. hoses, air cleaner etc.
5. For all “-AM” types operate the manual stop control and check that the engine stops within a few seconds.

Integral Engine Air Cleaner (where fitted)

Replace air cleaner element at the periods recommended by the engine manufacturer. (Spare elements are available from Chalwyn.)

IMPORTANT: Before operating the engine check that the manual stop handle is fully pushed into the engine run position.

Important Notes:

The three monthly routine maintenance period requirement is dependent on the operating conditions to which the equipment is exposed and, by experience, may need to be varied.

Any maintenance problems not covered by the routine maintenance schedule should be discussed with your Chalwyn Distributor before any repair work is undertaken.

Americas

AMOT - USA

8824 Fallbrook Dr
Houston, TX 77064
USA

Tel: +1 (281) 940 1800
Fax: +1 (713) 559 9419
Email: sales.houston@amot.com

AMOT - CANADA

4320 Roper Rd NW
Edmonton, Alberta T6B 3T8
Canada

Tel: +1 (780) 465 4429
Fax: +1 (780) 469 6275
Email: sales.houston@amot.com

Asia Pacific

AMOT - CHINA

Bd. 7A, No. 568, Longpan Rd.
Malu Jiading, Shanghai 201801
China

Tel: +86 (0) 21 5910 4052
Fax: +86 (0) 21 5237 8560
Email: shanghai@amot.com

Europe, Middle East, Africa

AMOT - EMEA

Western Way
Bury St Edmunds
Suffolk IP33 3SZ

Tel: +44 (0) 1284 762222
Fax: +44 (0) 1284 760256
Email: sales@amot.com

www.amot.com